

# SUPERINTENDENT'S REPORT

February 11, 2026

Dave Eberwein



# TUMBLER RIDGE



Our hearts are with the families, school and community during this horrifically difficult time. We share in the loss being felt by so many in such a small community.

SD63 Critical Incident Response Management team has been involved in creating district messaging for staff.

Parents / guardians have been messaged today about supporting their children at home.

Flags have been lowered to half-mast.

# **SUPERINTENDENT'S REPORT**

## **PARENTS / GUARDIANS AS PARTNERS IN LITERACY**

February 11, 2026

Dave Eberwein



# Supporting Literacy Learning at Home

## School District Website

Helena Takhar, Director of Instruction

Darcy McNee, District Teacher Leader

Marnie Chambers, District Teacher Leader

Robin Hembruff, Information Technology





# The Saanich Schools K-12 Literacy Plan



- Embeds evidence-based practices and continuous professional development across all levels
- Leverages Mentorship, Cross-role Collaboration, and Literacy Teacher Leaders to build capacity
- Uses district-wide assessments (e.g., Kindergarten Screener, Literacy Assessment) for data-informed decisions, ensuring early identification and targeted support
- Fosters home to school partnerships by equipping families with tools and strategies to support literacy learning at home



# Literacy in Elementary Schools

## Supporting Students

- Kindergarten Screener - Non-intrusive focused on supporting instruction
- Literacy Assessment for all Grade 1-5 students
- Literacy Intervention Programs (13 K-5 Teachers)
- Speech and Language Pathologists

## Supporting Staff

- Literacy Series for all K-3 Teachers with Dr. Shelby Pollitt - Responding to teacher feedback for consistent, high-quality literacy instruction across the district (oral language, reading instruction, writing instruction).
- Intermediate Grade 4-5 Fluency Project
- ELA4FI – Learning Series for French Immersion Teachers





# Literacy in Middle Schools

## Supporting Students

- District Literacy Assessment for all Grade 6-8 students
- Middle School Literacy Intervention Teachers

## Supporting Staff

- Connecting schools & disciplines - teachers/SLPs/ISTs
- Modelling and supporting research-based assessments
- Learning sessions on structured literacy instructional strategies - morphology, fluency, vocabulary
- Co-creating and sharing resources



# Literacy In Secondary Schools

## Supporting Students

- District Literacy Assessment for Grade 9 students (Pilot)
- Graduation Literacy Assessments (Grade 10, 12)
- Learning Strategies Courses and supports

## Supporting Staff

- Teacher librarian using DLA data to determine literacy needs
- Co-teaching disciplinary literacy lessons
- District Team working with provincial network (only island district) to examine Writing and Assessment in the Age of AI.



# Key Components of Literacy Instruction

## Structured Literacy

A teaching approach that is explicit, systematic, and evidence-based; includes phonics, decoding, spelling, and language comprehension.

## Phonological & Phonemic Awareness

Hearing and working with the sounds in spoken words (rhymes, syllables, individual phonemes).

## Phonics

Understanding how letters and sounds connect so children can read and spell.

## Decoding

Using phonics knowledge to sound out and read unfamiliar words.

## Decodable Texts

Books that use phonics patterns children have already learned so they can practice real reading.

## Morphology

Understanding word parts (prefixes, suffixes, roots) to support vocabulary, spelling, and comprehension.

## Fluency

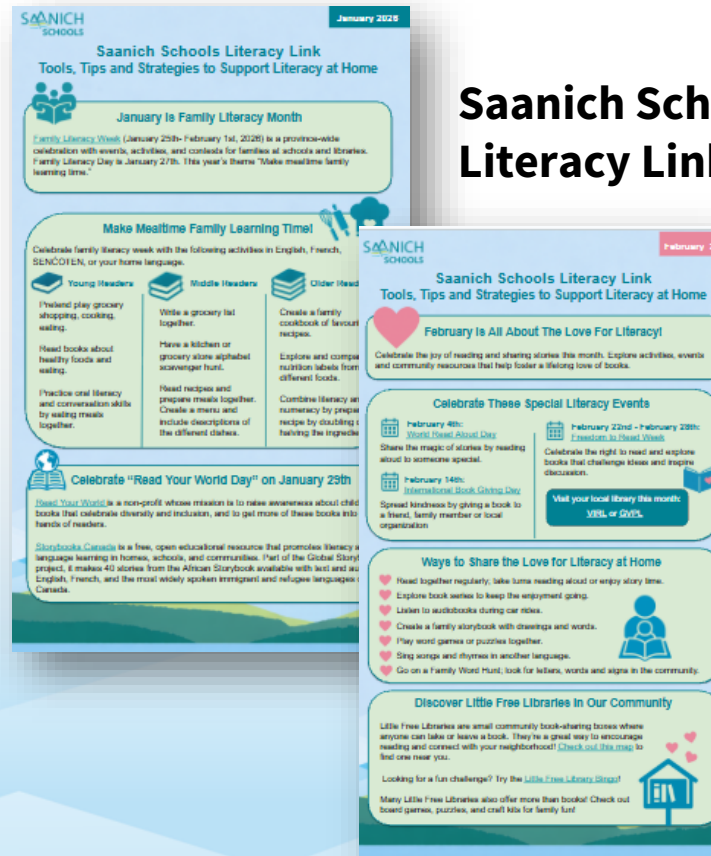
Reading accurately, smoothly, and with expression so the child can focus on understanding.

# Supporting Literacy Learning at Home

## School-Based Supports

- Home to Classroom Connections
- Classroom newsletters/updates
- Family Literacy events
- Reading mornings
- Learning Commons websites
- Home Reading programs

## Saanich Schools Literacy Link



## Parent/Guardian Support Website



# Supporting Literacy Learning at Home



The screenshot shows the top portion of the Saanich Schools website. At the top is a dark teal navigation bar with the Saanich Schools logo on the left and a series of menu items with dropdown arrows: 'Our District', 'Board of Education', 'Schools', 'Resources', 'Programs', and 'Contact'. A magnifying glass icon for search is on the far right. Below the navigation bar is a large hero image featuring a young boy in an orange shirt being read to by an adult. The text 'Supporting Literacy Learning at Home' is overlaid on the left side of the image. A yellow circle with a mouse cursor icon is positioned on the right side of the hero image. Below the hero image is a white section with a green horizontal line, followed by the heading 'How We Build Readers Together'. A paragraph of text follows, explaining the importance of reading and the role of the website. In the bottom left corner, there is a video player control bar showing a pause icon and a 0:00 timer.

**SAANICH SCHOOLS**

[Our District](#) [Board of Education](#) [Schools](#) [Resources](#) [Programs](#) [Contact](#) [Q](#)

## Supporting Literacy Learning at Home

### How We Build Readers Together

Reading is an amazing and complex skill, and children build it step by step with support from both home and school. It involves many parts, like understanding sounds, recognizing words, building vocabulary, and making meaning from what they read. Every child develops these skills at their own pace, and families play a powerful role in helping them grow. On this site, you'll find simple explanations of each component and how they work together to help your child become a confident, joyful reader.

0:00



# **SUPERINTENDENT'S REPORT**

## **PARENTS /GUARDIANS AS PARTNERS IN LITERACY**

February 11, 2026

Dave Eberwein

