



Superintendent's Report

Dave Eberwein, Superintendent

Oct 14, 2020

Superintendent's Report

- ▶ Mental Health & Well-Being
- ▶ Cultural Competency Training
- ▶ Fall 2020 Enrollment

REPORT



MENTAL HEALTH AND WELL-BEING

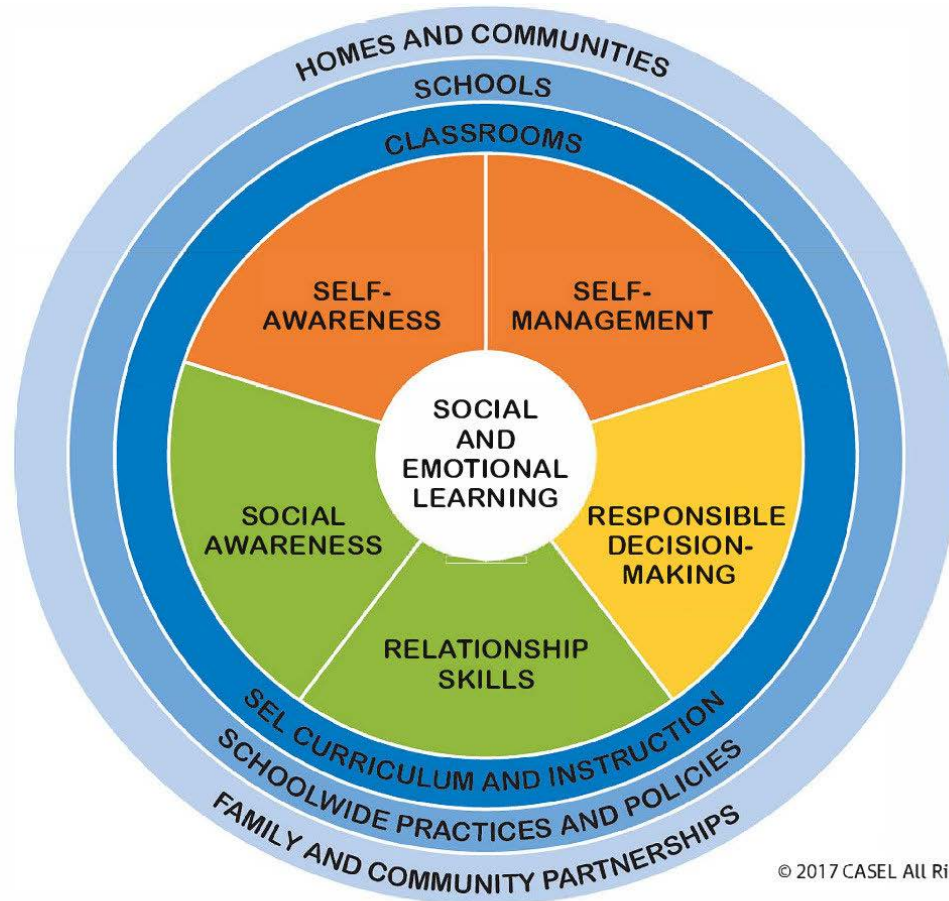
SUPPORTING SOCIAL AND EMOTIONAL LEARNING IN
SAANICH SCHOOL DISTRICT

- ▶ Supporting Mental Wellness and Social-Emotional Learning
- ▶ Monthly Learning Snapshots
 - ▶ Professional - An invitation for Saanich Schools staff to learn together
 - ▶ Parent/Guardian - Handy information on social and emotional development
- ▶ Topics Planned to Date:
 - ▶ Social-Emotional Learning
 - ▶ Screen Time & Social Media
 - ▶ Stigma & Resilience
 - ▶ Healthy Relationships
 - ▶ Self-care
- ▶ October's Snapshot: Social-Emotional Learning
- ▶ Links within District and School websites



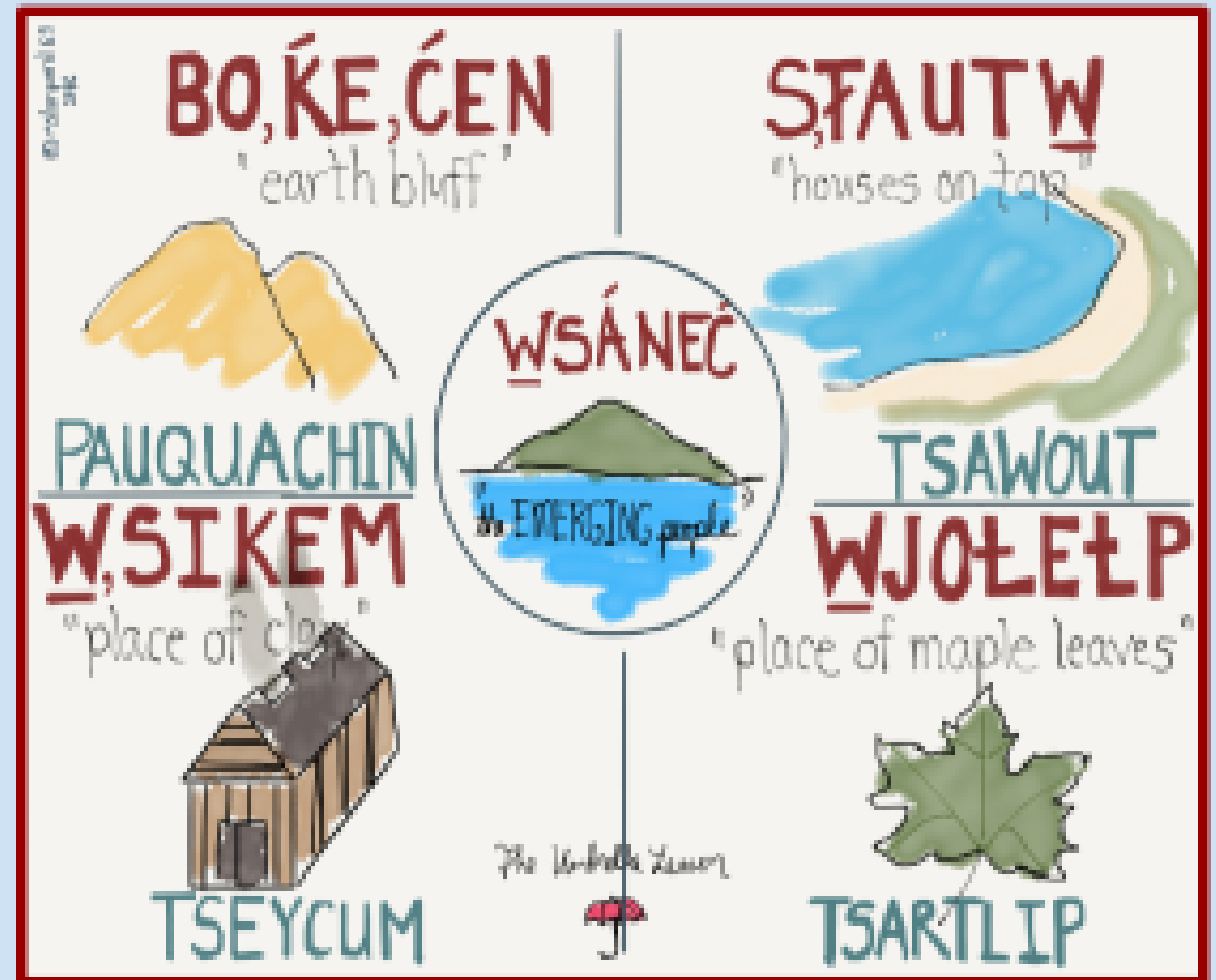


October Snapshot

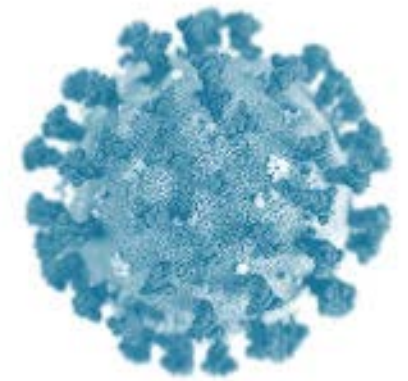


Cultural Competency Training For Saanich Staff

- Created and facilitated by Sheralyn Macrae
- Plan to have all district staff trained by June 2021
- Scheduled sessions with Saanich School Board and Transportation staff
- Training available for teaching staff at their school
- Training Day for CUPE and Board office staff
- Model to train new staff



Fall 2020 Enrollment - 1701



| Level | Forecast | Sept 30, 2020 | Difference | Percent Δ |
|--|--------------|---------------|-------------|--------------|
| Elementary | 2,877 | 2,784 | -93 | -3.3% |
| Middle | 1,556 | 1,480 | -76 | -5.1% |
| Secondary | 2,279 | 2,179 | -100 | -4.6% |
| <i>Neighbourhood School TOTAL</i> | 6,692 | 6,443 | -249 | -3.7% |
| SIDES | 285 | 802 | +517 | +181.5% |
| SIDES (+ adults) | ≈ 365 | ≈ 935 | +570 | +158.3% |
| Alt Programs | 185 | 183 | -2 | negligible |
| CE | 15 | 12 | -3 | negligible |
| <i>Overall TOTAL</i> | 7,177 | 7,440 | +263 | +3.5% |

Anticipate an approximate cost-neutrality due to maintaining high staffing levels in neighbourhood schools and differentiated funding for DL students